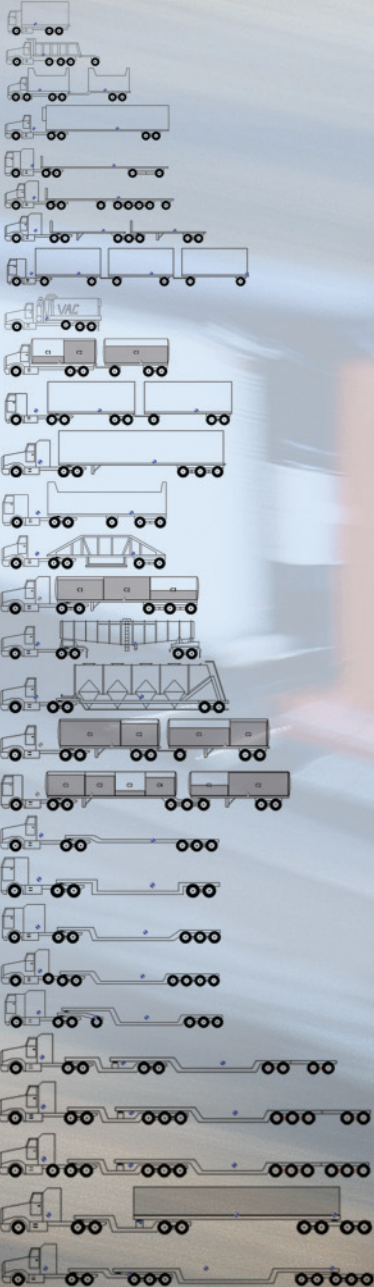


Load Xpert™

Axle Load Calculation software

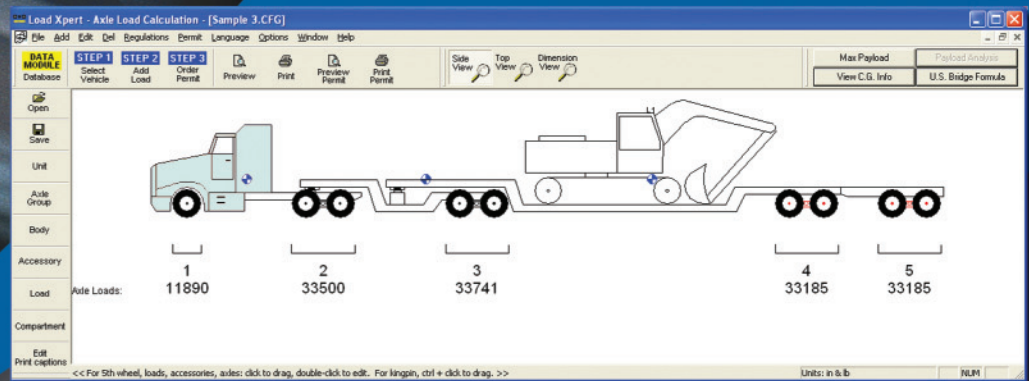
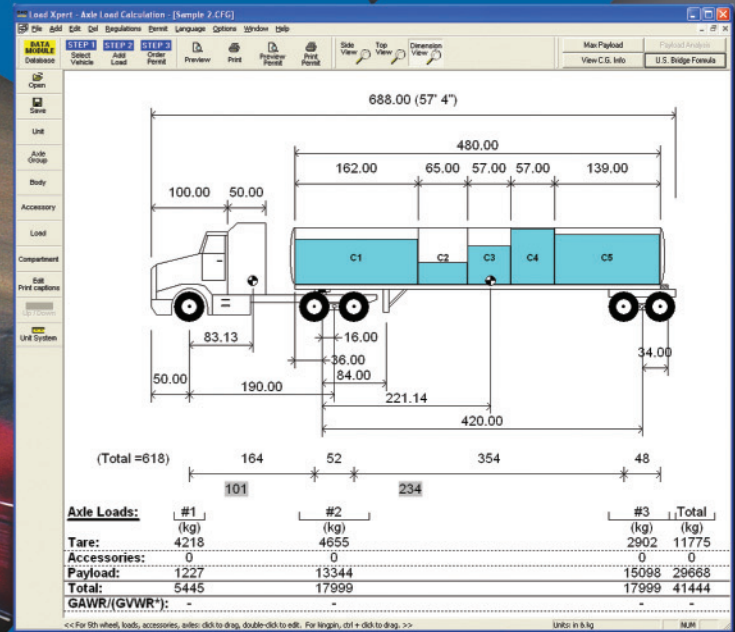
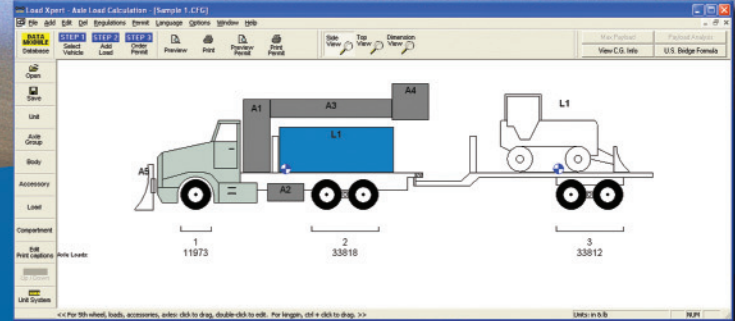


SAMPLE VEHICLES



Load Xpert™ is a user friendly axle load calculation software that lets you visually configure most types of trucks. Add single or multiple payloads and software will display axle loads instantly.

With a click of a mouse you can drag loads to different places on the trailer and see the axle loads recalculated in real-time! Imagine how impressive this can be if you do this in front of a customer.



Load Xpert™

Axle Load Calculation software

Axle Load Calculation

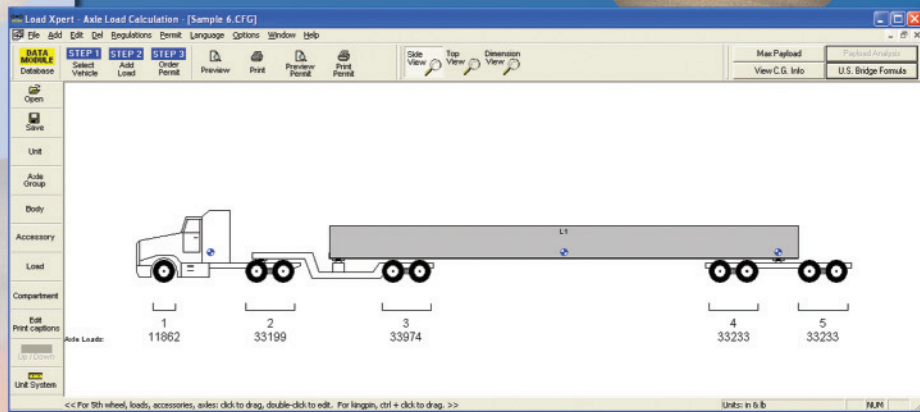
- Choice of single, tandem or tridem steer and drive axles
- Supports unlimited number of axle groups for trailers (single, tandem, triple, quad, lift and sliding; pusher or tag)
- Supports adding body and unlimited number of loads and accessories
- Add unlimited number of compartments for tank vehicles
- Supports for hitch load for straight trucks (i.e., load transferred from trailer)
- "Click & Drag" fifth wheel, kingpin, axles, pintle hook, loads and accessories and see instantly their effect on axle loads and C.G. position
- View and print truck in side and top views with dimensions and weight distribution
- Use **Load Xpert™**'s LX-CAD, a simple drawing package to modify the look of your tractors, trailers, loads and accessories via DXF link.
- Choice of units: US or metric

C. G. Calculation

- (Vertical, horizontal & lateral)
- Calculates overall C.G. (Center of Gravity) for truck, loads, accessories, etc.

U.S. Interstate Bridge Formula Verification

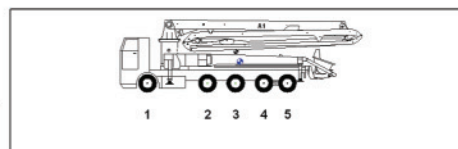
- Verify whether your truck complies with the U.S. Interstate Bridge Formula
- Print bridge violations and allowable loads for all bridge combinations



U.S. BRIDGE FORMULA for Concrete Pump

Printout of Load Xpert software

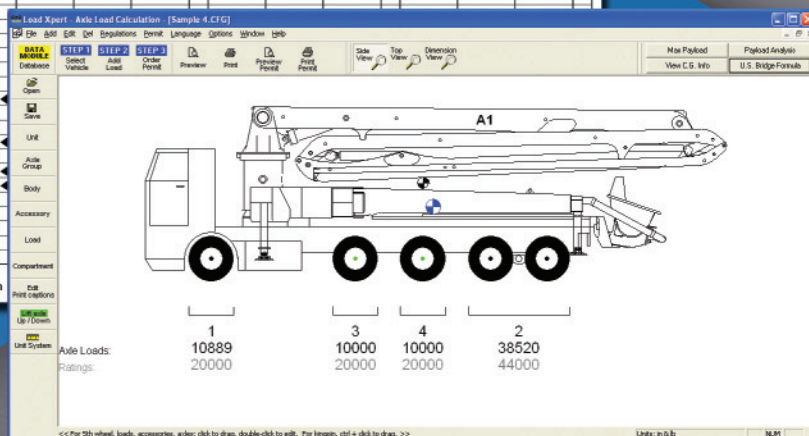
Company: ABC Inc.
Ref.:
Date:



BRIDGE FORMULA OPTION:
Maximum Gross Vehicle Weight: 80000 (lb)
Maximum Load on axles with single tire: 12000 (lb)
Permissible Load rounded to the nearest 2 (lb)
Bridge length rounded to the nearest foot

Axle Bridge	Allowable Load (lb)	Current Load (lb)	Axle Bridge	Allowable Load (lb)	Current Load (lb)	Axle Bridge	Allowable Load (lb)	Current Load (lb)	Axle Bridge	Allowable Load (lb)	Current Load (lb)
1	12000	10889									
2	20000	10000									
3	20000	10000									
4	20000	10000									
5	20000	10000									
1-2	32000	20889									
1-3	48000	30889									
1-4	56000	50149									
1-5	63624	69409									
2-3	34000	20000									
2-4	43500	39260									
2-5	51334	58520									
3-4	34000	29260									
3-5	42750	48520									
4-5	34000	38520									

U.S. Bridge Formula Violation



Look created using our LX-CAD software, courtesy of one of our clients: Alliance Concrete Pumps Inc.

Maximum Payload Calculation

- Calculates maximum allowable payload and its position based on desired loads (Choose U.S. Interstate Bridge Formula or user-defined loads)

Payload Analysis

- Calculates maximum allowable payload based on weight ratings (GVWR and GAWR)

Professional Printouts

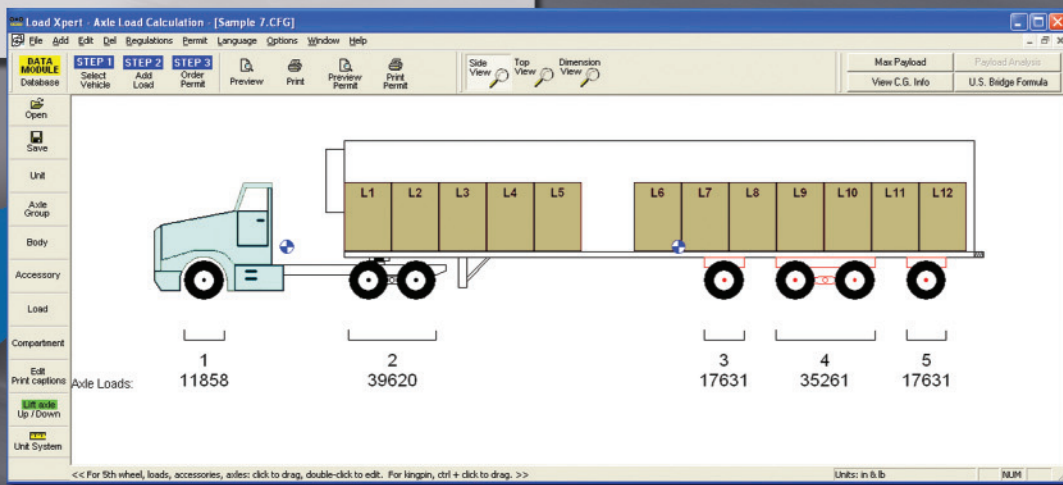
- Preview and Print:
 - Side and top views with dimension & weight distribution
 - C.G. info
 - Maximum Payload & Payload Analysis
 - U.S. Bridge Formula Verification
 - Load & Accessory lists

Database

- Save all your vehicles, bodies, accessories, axle groups and loads in the database
- Database can be shared by several users in a network

Cost Savings

- Avoid overweight fines and associated costs
- Avoid round trips to weigh scale and save time and money
- Reduce truck loading time by knowing precisely where to place loads
- Reduce wear & tear of equipment with better weight distribution on all axles
- Great visual sales tool that can help to demonstrate trailer load carrying capacity by dragging axles, fifth wheel, kingpin, etc., and helps you bring more sales
- Useful tool for establishing specifications during procurement of new equipments
- Helps to design vehicles with maximum payload capacity
- Precisely calculate axle loads for ordering overweight-permits



Contact us for more info

www.loadxpert.com

Tel : (450) 923-1458

Fax : (450) 923-2077

info@loadxpert.com

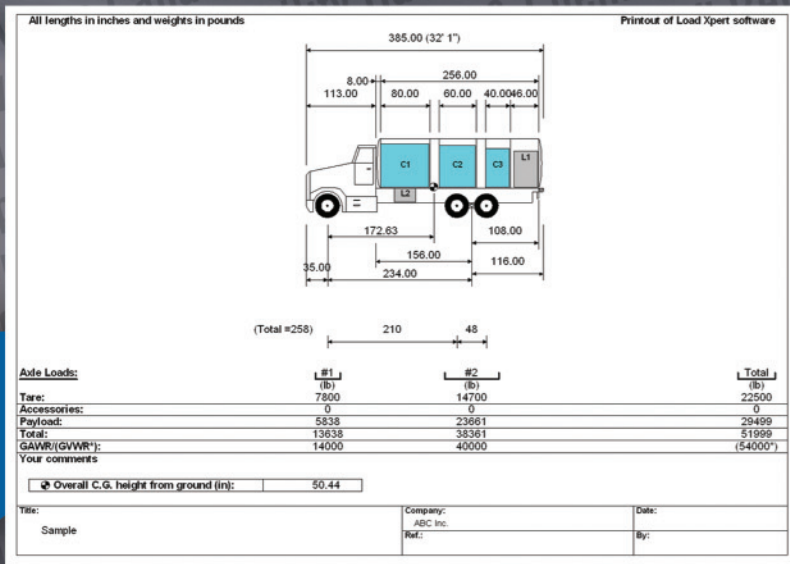
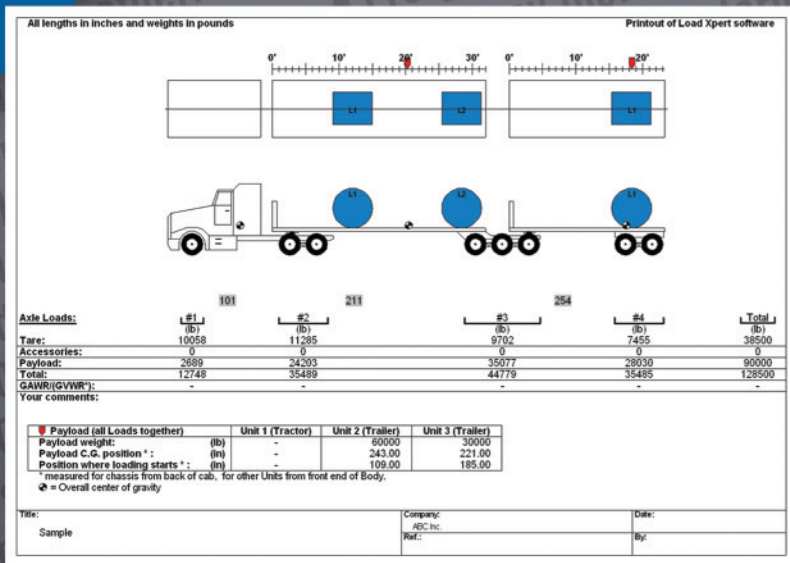
www.loadxpert.com

Load Xpert™

Axle Load Calculation software



Sample printouts



**Proven and Tested by over
1 000 users!**

"We are able to quickly and accurately determine load placements and resulting axle weights with Load Xpert."

"Using the software has reduced the occurrences of unsafe and costly overweight conditions."

Robert Dash
Avista Utilities

"I was doing professional looking weight distributions in no time"

"I gladly use Load Xpert, and would recommend it to anybody involved in the transportation industry"

"This program has made the sale for us in a number of instances. When you can go up to an owner of a company, and confidently tell, and show him how much material he can handle that is a big asset"

"I have been called, and personally thanked by customer's that have bought our product, for saving them money, and I did it all with the very easy to use Load Xpert software"

Chad Oldenkamp
Formerly with Circle R Inc.

Contact us for more info

www.loadxpert.com

Tel : (450) 923-1458

Fax : (450) 923-2077

info@loadxpert.com

www.loadxpert.com



CIE-TECH Inc.
5990 Auteuil ave.
Brossard, QC
Canada, J4Z 1N2